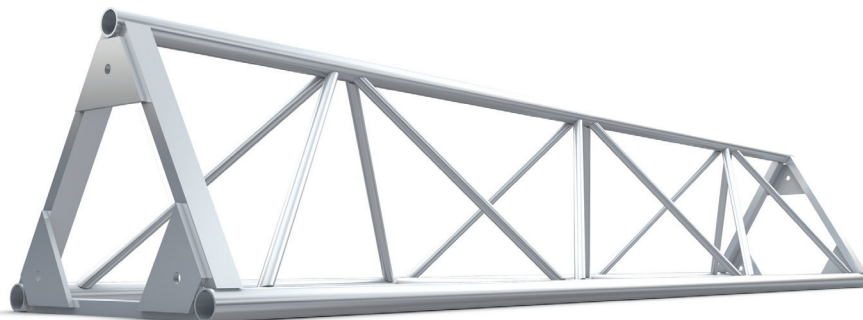


GENERAL PURPOSE 20.5" TRIANGLE

23 1/4" x 60° equilateral triangular truss is designed and manufactured for high strength, in relation to storage space required. The main chords are 2" x 0.125" tube and the diagonals are 1" x 0.125" tube in either 6082T6 or 6061T6. The truss can be used with a Ground Support System with appropriate Sleeve Blocks and Towers. Each section is complete with bolts.

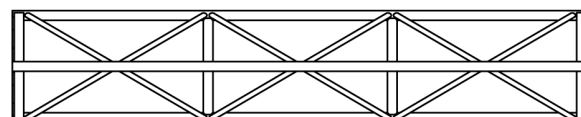


Standard lengths and weights

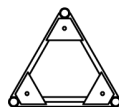
PRODUCT CODE	DESCRIPTION	WT lbs
B0500	10' section	66
B0501	8' section	53
B0502	5' section	35

Corners

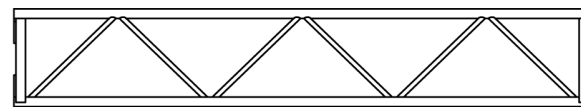
PRODUCT CODE	DESCRIPTION	WT lbs
B4505	2 way corner block	35
B4506	3 way corner block	39.5
B4507	4 way corner block	44
B4508	Flat pivot section	39.5



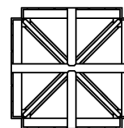
Plan View



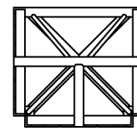
End View



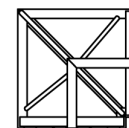
Side View



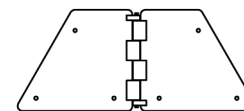
4 Way



3 Way



2 Way



Flat Pivot Section
0-180°

Loading chart

Allowable Load Data Span feet	Maximum Allowable Uniform Loads		Maximum Allowable Center Point Loads	
	Loads pounds	Maximum deflection inches	Loads pounds	Maximum deflection inches
10	5600	0.1	2800	0.1
15	5600	0.34	2800	0.34
20	4700	0.70	2350	0.70
25	3700	1.09	1850	1.09
30	3000	1.57	1500	1.57
40	2100	2.8	1050	2.8
50	1300	3.75	650	3.75
60	700	4.50	350	4.50

LOADING FIGURES show maximum loads between supports in addition to self weight of truss. Information extracted from structural report by Jessie Mise. + Denotes load limited to suit maximum shear capacity. *Denotes load limited to a maximum deflection of (span/160). All loads include a 20% overload factor for dynamic effects.